

CimFAX[®] Fax system in one box

CimFAX[®] FAX SERVER

Multiple Users Licensed
Fax from PC

Hotline

 86 13600011553

Cimsun[®]

Cimsun Tech(GZ) Co., LTD

Room 2216, Shipai West RD, KB Zhanwang Digital plaza, Guangzhou, China

Zip Code: 510630

Web: www.cimfax.com

Email: sales@cimfax.com support@cimfax.com

Tel: (+86)020-85566891, 85566892

Fax: (+86)020-85566893

Ext: Sale 6007, Accounting 6008, Support 6009



Scan to visit
CimFAX official website



Scan to visit
CimFAX Amazon store.

About Us

Established in 2003, Cimsun Tech (GZ) Co., Ltd has been in information and communication for over a decade and been dedicated to the R&D of embedded software-and-hardware integrated product. We are now proud of the substantial progress we have made in paperless fax.

We boasts ourselves of a group of specialists who have rich experience in such aspects as product development, marketing, and customer service. It is their dedication that makes CimFAX an accurate, secure and professional fax solution to our customers.

Aiming to create a brand famous all around the world, we are committed to make CimFAX fax server an environmentally-friendly, cost-effective, convenient, secure, stable, and efficient fax solution for organizations spanning various industries and fields home and abroad. Our customers include government agencies, multinational enterprises, telecom operators, electric power firms, petroleum firms, logistics firms, finance companies, and tourist agencies whom we have helped grow at the greatest profits over years.

TEN YEARS DEDICATION FOR THE BEST ENTERPRISE FAX SYSTEM

Why 90% of top 500 companies are using automatic fax system?



What is an automatic fax system?

CimFAX automatic fax system enables users to send and receive faxes through LAN or WAN. It can fax with fax machines while it is more convenient than the latter.

To make faxes more easily managed, CimFAX automatic fax system integrates functions like user's license, fax history, auto answer, auto distribution, scheduled group faxes, remote access, and fax to email.



CimFAX utilizes advanced embedded technology to make cost-effective enterprise fax server.

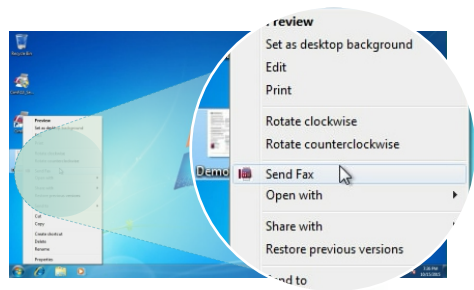
CimFAX Product Features

1 One CimFAX outdoes multiple fax machines.



- Allows multiple users to fax simultaneously.
- Every employee can send and receive faxes from their desktop.
- Faxes automatically queue up.
- Schedule faxes to be sent.

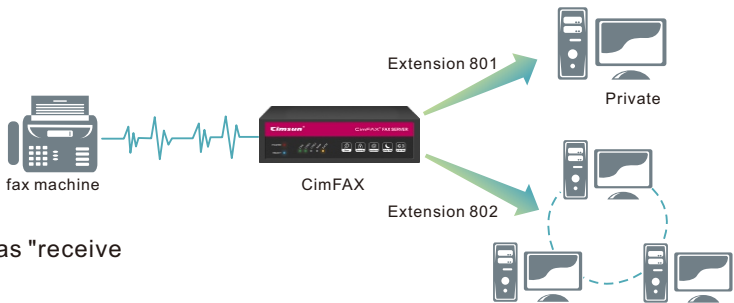
2 Fax from computer. No more paper. Easy to manage.



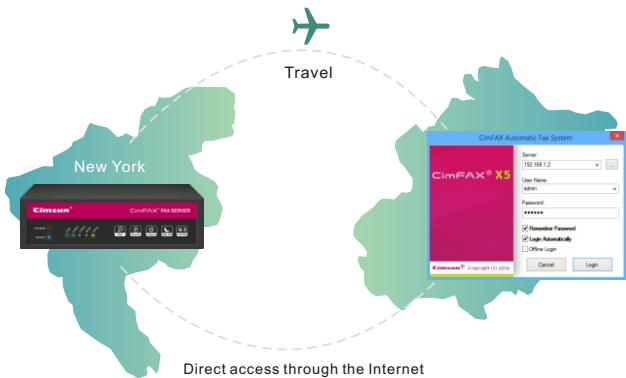
- Virtual print the document and fax it.
- Pop-up notification. Never miss an incoming fax. Check and print only when necessary. No more short of ink, or paper jam.
- Automatically export faxes to printer, image files or network sharefolders.
- Fax stored on both the server and your PC. Easy to retrieve anytime anywhere.

3 Multiple extensions. Fax to computer.

- Set up extension for each user and faxes will be routed to the exact recipient;
- Faxes containing critical information are no more public;
- Distribute faxes to multiple users.
- Permissions of extensions can be configured as "receive only" or "send only".



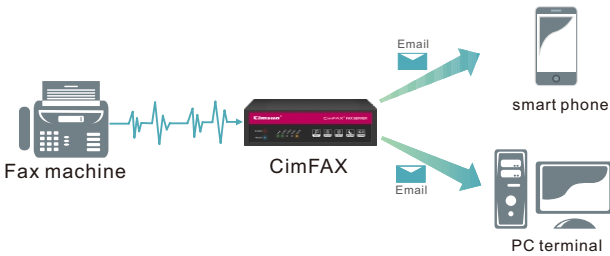
4 Remote login while traveling.



- Get on the Internet and log into the server while traveling to send and receive faxes. Never miss any fax.
- Offices in different cities? Don't worry. Remote login. You need only one CimFAX server and one phone line.
- The built-in special dynamic DNS makes it more secure for remote access.

5 Fax to email.

- Fax forwards to email 24/7;
- Check faxes in email on computer or mobile phone. SMS notification. Never miss any incoming faxes.



6 Point-to-point transmission.

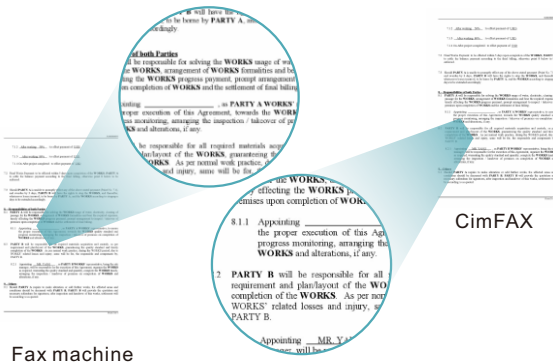


- Sends and receives faxes through PSTN, like fax machines, not involving any third party equipment. Enterprises' classified information are safe.

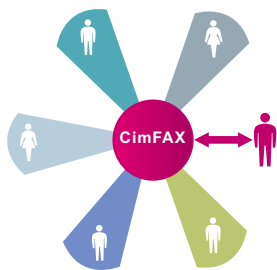
Notice: The network fax service that charges monthly rental somehow lacks this since it has to submit faxes to the cloud server on the Internet.

7 Clear image and text. Supports OCR.

- Higher resolution than faxes on fax machines.
- No paper jam. Faxes can be previewed before sent out.
- OCR enables words in the fax converted to editable text.



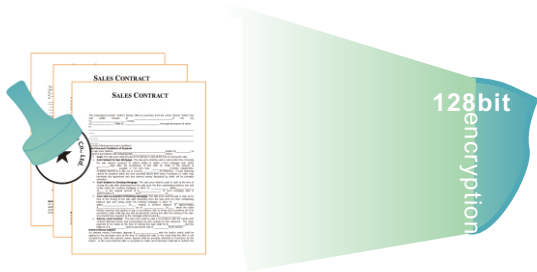
8 Real-time status synchronization, and perfect support for collaborative work



- CimFAX is the only fax system that adopts real-time communication. Faxing status, including "printed", "replied", and "forwarded" will be synchronized to all users in real time.
- **Application scenarios:** When several people are handling the same order at the same time, if one of them prints the order, the others will see the status of the order as "printed" within 1 second.

9 Irreversible 128 bit encryption protection.

- Local fax documents and digital signature library are protected by 128 bit encryption;
- The safest irreversible encryption algorithm is used in communication over network so that even the faxes are intercepted, stolen, copied, the contents of the faxes will not leak.
- Perforated stamp supported for faxes with multiple pages.



10 Small size. Low power consumption.



- The smallest size and the lowest power consumption in the world.
- Only 5W. Consumes 1 KWH if operates 24/7 for a whole week.

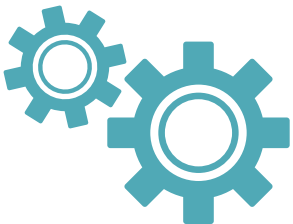
11 Operates independently.

- CimFAX is a stand-alone server with a processor, memory, network module and fax module;
- Software and hardware are integrated and strictly tested prior to delivery;
- The close system and solidified software make it free from maintenance and all kinds of trojan and viruses;
- After-sales service ensures the server's compatibility and stability, without any software copyright issue.

12 Flexible deployment, and good extensibility

- It supports distributed clustering. By binding several servers over network, we make distance lines shared and management centralized.
- The integrated switch supports cascading and on-demand expansion. Double network interface and multiple IP. Works in multiple network segments.
- Second development available. SDK provided supports languages like C++, VB, and C#. Ordinary programmers can integrate fax with their enterprise system (Ultimate Edition).

13 Stringent design. High quality Tested.



- Designed based on strict industry standard. High quality. The only manufacturer that offers 2-year warranty.
- True triple lightning protection (co-module, differential mode, and surge), reducing maintenance worries;
- Caller identification at both calling and receiving (DTMF, FSK), and compatible to various formats;
- Power-off proof and solid state storage protect the server from frequent power off;
- Pass line adapt tests of more than 40 typical regions, and complete sending and receiving test with more than 600 fax machines of different types;
- The pursuit of perfectness makes CimFAX keep the record of trouble-free operation for 3 years.

In the past

Enterprises had to deploy automatic information system by themselves, which is

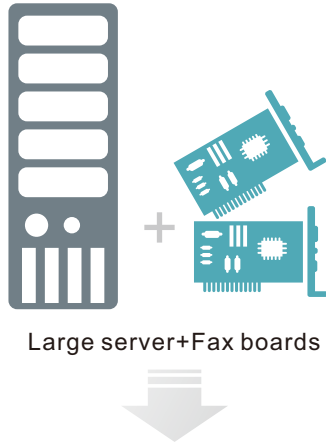
Costly and time consuming

NOW

CimFAX automatic fax system is as easy as an ordinary office product to manage.

Using an automatic information system in the past, enterprises had to buy not only hardware equipment and software license, but also the expensive installation and daily maintenance. Now, CimFAX saves you from all of these spending.

COMPARE



Large server+Fax boards

PK



CimFAX fax sever

Hardware equipment fee	High	Low
Software license fee	Operating system > USD 150 Fax software > USD 700	Operating system and fax software integrated and licensed No extra fee
Installation fee	> USD 300	Plug-and-play, No need for technical intallation personnel
Daily maintenance fee	> USD 30 / month	Free from maintenance
Ambient environment	Clean air conditioning room	Anywhere covered by LAN
Equipment size	big	small
Power consumption	>300W	<5W

Milestone

1988



Modem + Fax software

Modem + fax software have been used to send and receive faxes for a long time. Due to its low price, it is popular among users sensitive to first purchase cost. However, the core function of the fax software is installed on the host computer, with high power consumption, so it cannot ensure stable operating for 24 * 7. What's more, ordinary digital modem is mainly used for digital telecommunication and faxing is only an auxiliary function. It cannot meet the complicated fax requirements, or adapt to the changeable phone line environment. what's worse, it is incompatible to fax machines of various types, which influences the success rate of faxing and user satisfaction. At present, modem + fax software is mainly used on laptops for temporary faxing by businessmen on trip.

1993



Digital fax machines

Digital fax machines, like the USRobotics, send and receive more pages of faxes by expanding flash memory; the interface is changed to USB interface; at the same time, fax software is installed for convenience. Digital fax machines is better than modem in terms of hardware, but share one thing in common: due to the relying on the host computer. When the host computer is powered off, digital fax machine can only do the basic faxing. Advanced functions like fax to email, fax scheduling, and remote access will not be available.

1997



Voice card fax system

Voice Card Fax System is mainly used by large enterprises with large fax volume and integrated fax lines (generally, over 8 fax lines are connected at the same time); voice fax card is a high-end card designed for fax and IVR voice system, which can provide fax performance with high stability. In order to ensure the security and stability of fax data, the host computer of voice card is usually cabinet server that is installed in the computer room with specialized maintenance. Despite the powerful and stable system of voice card, which can replace fax machines in large enterprises, its high cost for first time purchase and daily maintenance block many enterprises from purchasing. What's more, it requires all fax lines in one place, which makes it hard to implement for enterprises with multiple branches.

2001



Multi-functional printer

In the past, MFP's ROM is quite small. It receives a small amount of faxes when short of paper. With paperless faxing demand getting stronger, some high-end MFP begin to provide simple paperless faxing function. With the help of computer fax software, MFP is connected with the computer to work with the fax software for paperless faxing. At present, only a few MFP enable network share faxing. However, MFPs are still strongly relying on the host computer which is an ordinary public PC. If the PC is used as the fax sharing center, the fax business of the whole company will be affected for a long time once the computer is attacked by virus or undergoes a system breakdown. In fact, customers' using experience and manufacturers' targets tell us that MFP's paperless fax function is only an alternative on casual cases and is impossible for paperless management of all of enterprise faxes.

2003

CimFAX fax server

Cimsun Tech started to develop paperless fax product with embedded technology. That is CimFAX fax server ---a small-sized and software-hardware integrated server.

2005



Internet fax

Internet fax enables sending and receiving faxes by email or software client instead of fax machines or phone lines. The faxes sent or received goes through the servers built by the service provider and fax numbers are charged on monthly rentals for the fax number you are given. For those who don't fax frequently, internet fax is a very good option. However, to enterprises or government agencies whose faxes containing critical information, it might be rather risky because of its lack in the four elements of fax: real time, security, reliability and legality. Besides, when internet breakdown, it will be impossible to send or receive faxes, Whether faxes can be delivered in real time safely is also open to question. So is the charging standard of internet fax.

2006



The first CimFAX fax server on market

CimFAX is born for enterprises who want to send paperless faxes. With the powerful and easy-to-use fax sharing function, it enables every employee to receive and send faxes from their own computers. CimFAX uses special chips, thus is more stabile and compatible than normal fax modems. CimFAX operates 24/7 stably with only 5 W power consumption. Based on integration technology, CimFAX encapsulates all software and hardware to an independent network equipment. Unlike other paperless fax products that need a host computer, CimFAX can independently operate with access to LAN, which makes it free from virus and manmade faults. Although designed with the standard of professional voice fax machine, CimFAX costs less than voice card fax system and it doesn't need maintenance. What's more, CimFAX high-end models support distance binding. When bound, CimFAX will enable enterprises to centralize management of faxes of several branches. Contrary to internet fax services, CimFAX guarantees fax's security and real time since it connects to telephone line.

2007

The whole series of 1st generation CimFAX products cut a figure in paperless fax market.

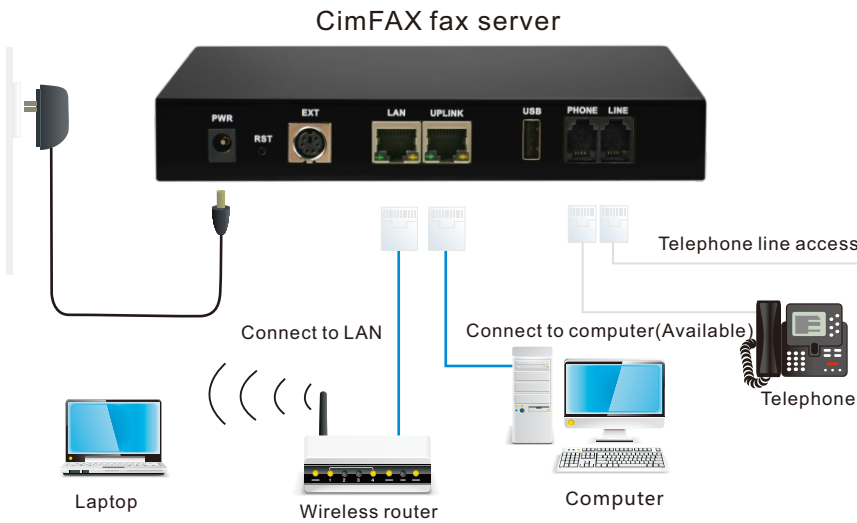
2010

The 2nd generation CimFAX fax server comes on the market and took lead in small integrated fax servers.

2013

The third generation CimFAX fax server proves to be successful, with more than 400,000 users.

Four-step Connection



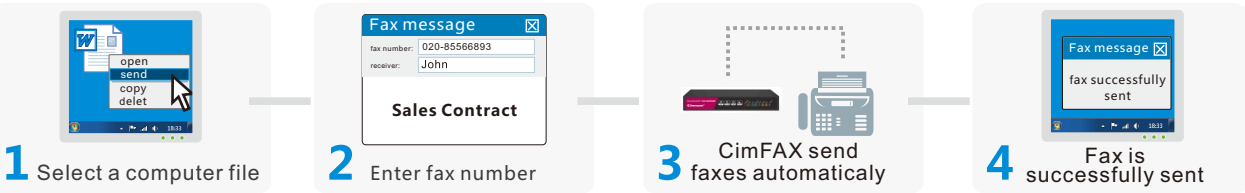
Sending a fax

Sending a fax by fax machine takes 3 minutes

"Print a computer file"- "Get a paper for printing"- "Walk to the fax machine"- "Dial the number"- "Wait for response"- "Put paper in the fax machine"

Sending a fax by CimFAX only takes 3 seconds

"Select a computer file"- "Enter fax number and Click send"



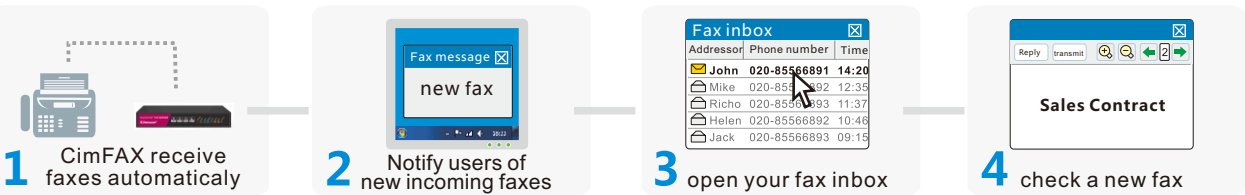
Receiving a fax

Getting a fax by fax machine takes X minutes.

"Faxes received at the front desk" - "manual distribution one by one" - "untimely delivery" - "re-track required"

Getting a fax by CimFAX takes only 1 second

"Faxes are directly sent to PC" - "pop-up window reminding faxes received"

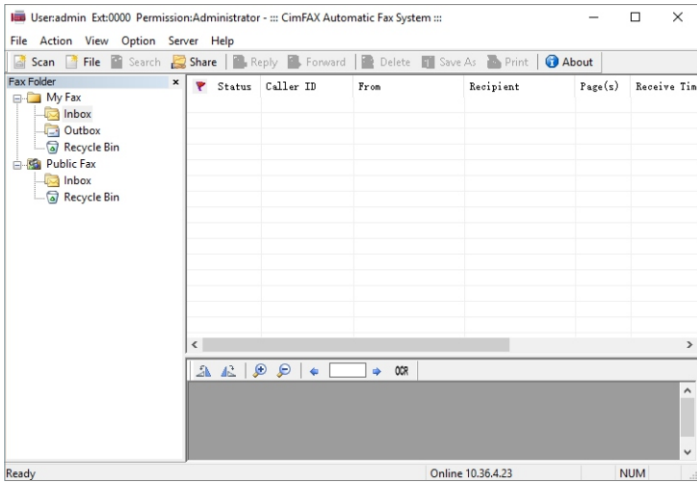


Cimfax allows you: Schedule fax, Broadcast, Forward and reply, Send and receive on trip, Fax to email. Fax your message anytime anywhere.

Software



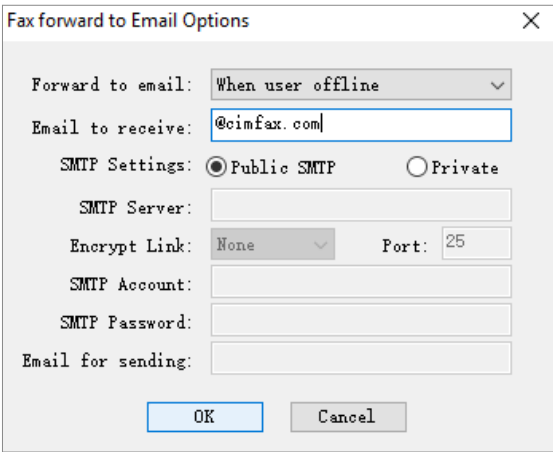
► Login screen



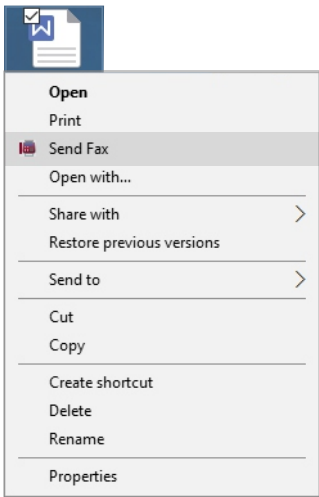
► Fax inbox



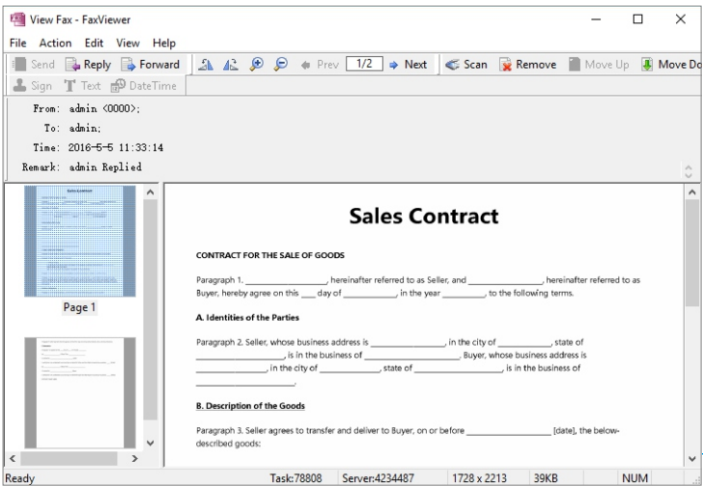
► Signature library



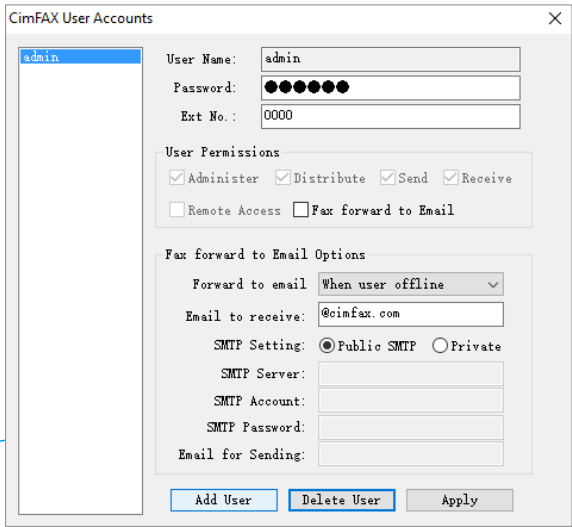
► Fax to email



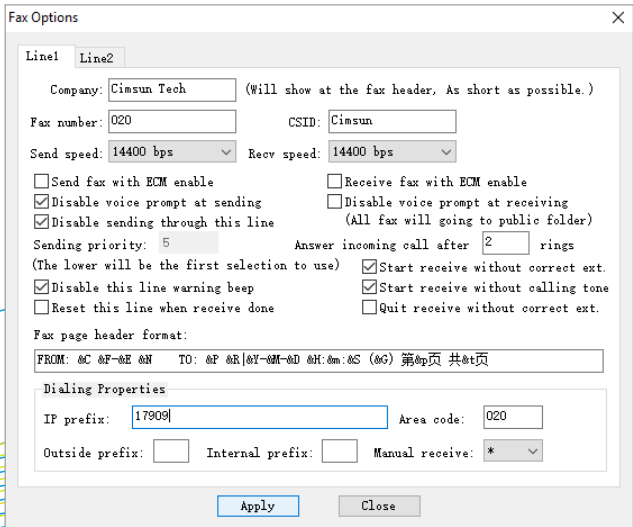
► Right click to send faxes



► Fax preview



► User management



► Fax settings

Products

Standard Edition

CimFAX standard edition is suitable for small-sized enterprises and SOHO studios.

Products

Professional Edition & Ultimate Edition

CimFAX professional and ultimate edition is suitable for medium-sized enterprises, and large enterprises that require physical isolation.

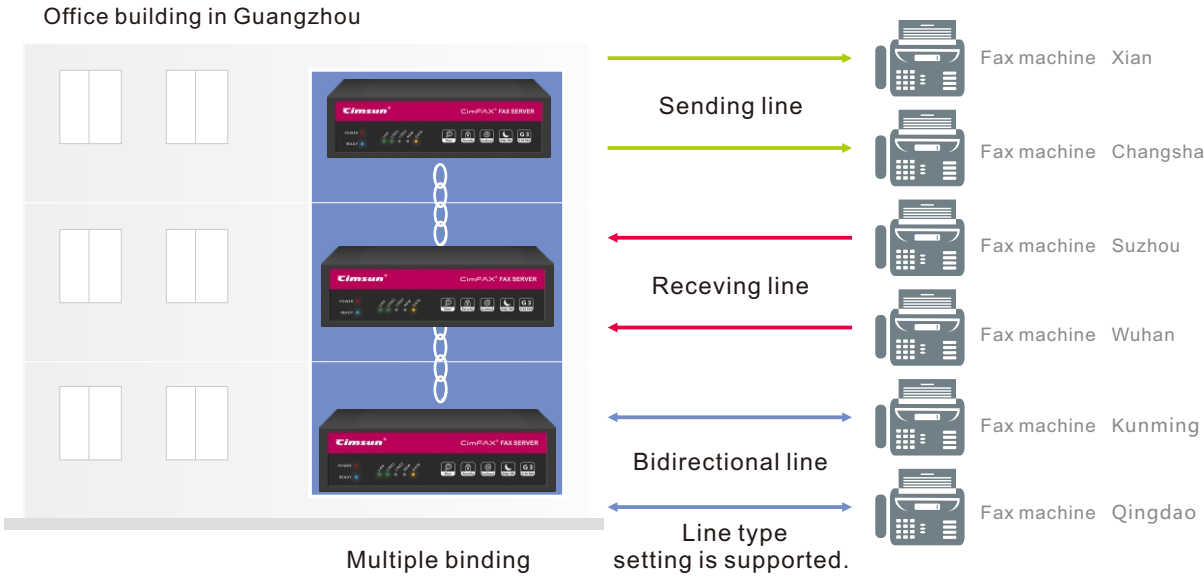
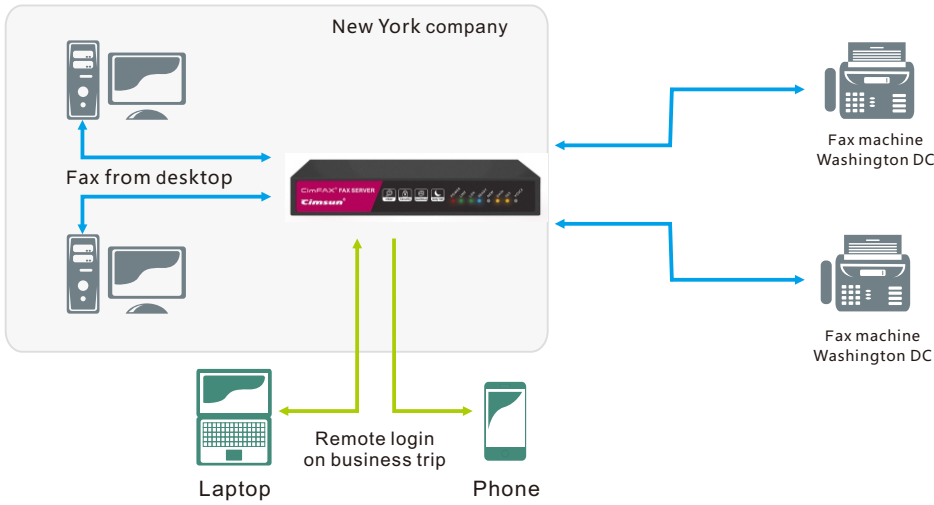


Specification	A5	B5	C5
Storage capacity	256MB (about 5k pages)	1GB(about 20k pages)	2GB(about 40k pages)
Users licensed	5	10	20
Fax line	1	1	1
Fax rate	14.4 K (max)	14.4 K (max)	14.4 K (max)
Server binding	Not support	Not support	Not support
Remote login	Optional	Optional	Optional
SDK	N/A	N/A	N/A
Multiple IP support	Optional	Optional	Optional
Fax to email	Support	Support	Support
Caller ID	DTMF and FSK	DTMF and FSK	DTMF and FSK
Maximum power consumption	4W	4W	4W
Dimension	18cm×10.5cm×3cm	18cm×10.5cm×3cm	18cm×10.5cm×3cm

Specification	H5	T5	W5
Storage capacity	4GB(about 80k pages)	8GB(about 160k pages)	16GB(about 320k pages)
Users licensed	100	200	400
Fax line	1	2	2
Fax rate	33.6 K (max)	33.6 K (max)	33.6 K (max)
Server binding	Local binding	Local binding	Local/distance binding
Remote login	Support	Support	Support
SDK	N/A	N/A	Support
Multiple IP support	Support	Support	Support
Fax to email	Support	Support	Support
Caller ID	DTMF and FSK	DTMF and FSK	DTMF and FSK
Maximum power consumption	5W	6W	6W
Dimension	19cm×25cm×6cm	19cm×25cm×6cm	19cm×25cm×6cm

Solution

Solution



Q&A

Q: Any software needed for CimFAX?

A: CimFAX is a plug-and-play fax server, software and hardware integrated. Users do not need any service software. You only need to install CimFAX client on their computer to check and edit faxes.

Q: Is CimFAX faster than ordinary fax machines?

A: The fax rate of CimFAX professional and enterprise editions can reach 33.6K, while that of ordinary fax machines is 14.4K, and thermosensitive fax machine only reaches 9.6K. CimFAX is 1 to 3 times faster than ordinary fax machines.

Q: How does CimFAX charges for sending and receiving faxes?

A: CimFAX receives and sends faxes through telephone lines just like normal fax machines but at higher speed. Users pay telecommunication service providers with the same standard. Faxes are clear and no paper jam. Thus, the communication time is greatly reduced, saving more spendings for users.

Q: Long distance fees are expensive. Is it possible to add IP numbers, such as 17909, 968200, and 17911 automatically when sending a fax?

A: Yes. The built-in automatic IP dial-up function of CimFAX will automatically distinguish whether the recipient's number is local or distance, and add IP prefix if it is distance.

Q:After installing CimFAX, can I set CimFAX as manual receiving because the fax line may be occupied by telephone calls sometimes?

A: Yes. You can set the value of "ringing to answer" of CimFAX to more than four, so that you can answer the phone before the last ring. If you want to receive a fax, press "+extension number" on the phone, to direct fax the recipient's computer.

Q: How do I send faxes with CimFAX if the recipient sets fax machine to manual answer?

A: You can set voice reminding for sending a fax on the CimFAX server. The server will play "This is ..., please receive the fax." when it is answered. After confirmation, the signal will be given to receive the fax.

Q: Is CimFAX able to fax after the computer is powered off?

A: Yes. CimFAX is a independent server. As long as connected to local area network, CimFAX can operate stably 24/7 with full functions after the computer is power off. Faxes will be received, automatically queue up, scheduled to send, forwarded to email. The computer only act as a media to view the faxes.

Q: Can the recipient receive and send faxes if he/she does not use CimFAX?

A: Yes. CimFAX is completely compatible with normal fax machines.

Q: How do I group sending to dozens and hundreds of customers?

A: Import customer fax number to the contacts, CimFAX will automatically list the numbers and send to them one by one, in real-time.

Q: What format does CimFAX support?

A: CimFAX provides virtual printer function. Therefore, any printable documents can be transformed to the fax format for sending. For example: Word, Excel, PPT, PDF, CAD,PSD, CDR, JPG, BMP, and TIF

Q: How do I generate digital signature and stamp?

A: Please sign/stamp on a white paper and put it in the scanner. The signature and stamp scanning function of CimFAX will automatically generate the digital signature and stamp and put it in the encrypted signature library.

Q: Can I send and receive faxes with the CimFAX in the company when I am on business trip?

A: Yes. After set the port mapping of the router or DMZ host to CimFAX, you can connect to the CimFAX in the company to receive and send faxes anywhere. Users without fixed IP can access to CimFAX with dynamic domain name (To meet the requirement of remote access, we developed the specialized dynamic domain name server used for CimFAX, without requiring a third party dynamic domain name, which is more stable and convenient).

Q: Does CimFAX fax server support 2, 4, or more lines?




A: For double line models of professional and enterprise edition CimFAX, 2 lines are supported; Two professional double line CimFAX can be bound to support 4 lines; The professional edition can support up to 128 lines after bound, and 1024 lines for group edition.

Q: Can I upgrade CimFAX software?

A: Yes. The client in the computer will automatically detect new versions and update online. The server software can upgrade only by uploading a firmware update package.

Customers

CimFAX is widely used by including government agency, administration department, service industry, tourism, logistic industry, manufacturing industry, financial industry, and medicine industry.

					
PricewaterhouseCoopers	MANE Flavor & Fragrance Manufacturer	ABICOR BINZEL	Das Erste	Huawei Technologies Co. Ltd	Mederer GmbH
					
Standard Chartered Bank	HK Quality Assurance	Hilton Hotel	Lion College	Amazon (China) Co.,Ltd.	China Petroleum
					
Macao Meteorological and Geophysical Bureau	Four Seasons Hotels and Resorts	Leica Shanghai Branch Co., Ltd.	Hong Kong Exporters' Association	The People's Bank of China Chongqing Branch	The Ascott Limited
					
DHL Express	The Messer Group GmbH	Sheraton Hotel	Citibank	Ritz Carlton Hotels	Sinopec
					
Dadong Aosheng Health Care Equipment Co., Ltd	Westin Hotel & Resorts	Volkswagen AG	Taiwan Mundipharma Pharmaceuticals Ltds	Eurasia University	Pingan Jiangsu Branch

- Government agencies:**
Foshan Municipal Party Committee, Nantong Economic Development Board, National Water Conservation Bureau, Zhongshan Foreign Economy and Trade Bureau, Foshan Education Bureau, Ningbo Development Area Investment and Cooperation Bureau, Zhuhai Three Prevention Office, Xiamen Discipline Inspection Commision, Guangdong Hunman Resource and Social Security Office, Guangdong Maternal and Child Care Service Center, Guangdong Three Prevention Office, Sichuan Observatory
- Politics and Law Agencies:**
Beijing Jiuyihuarui Tax Accounting Firm, Dalian Minyike Accounting Firm, Fazeming Law firm, Guangdong Property Right Shunde Exchange, Mushi Architecture Design
- Logistic industry:**
Japan Sankyu Logistics, FruiCMS Shanghai Branch, Shenzhen T-Ocean Logistics, Kunshan Shiyuan Logistics, Zhejiang Zhongyun Logistics, Dongguan Hanyang Shipping, Zhouhan Haigeng Shipping, Fujian Zhonghai Logistics
- Finance and security:**
JSITC, Fujian Industrial Securities, GF Securities, Dongguan Postal Savings Bank of China, Jiangsu Guoxin Investment Group Ltd, Nanjing Hengtai Securities, Pingan Security Jingsu Branch
- Hotel:**
Weldon Hotel&Resorts, VILL International Hotel, Shanghai Broadway Hotel, Grand Palace Hotel, Nanjing Junlin International Hotel, Guangzhou Grand Hyatt, Xinghewan Hotel, Nansha Hotel, Lidun Hotel, Tianjin Wanxiang International Tourism Agency, Hainan Ziyouren Tourism Agency, Henan Chinese Youth Tourism Agency, Zhuhai Guangzhilv, Nanjing Phoenix Holiday Tourism Agency, Hubei Aviation Holiday International Tourism Agency, Tibet Kangtai Tourism Agency
- Manufacturing industry:**
China Railway Materials Company Ltd, Hantong Holdings Group, Foshan Keshun Electrical Appliances, Jiangsu Sumec Group, Jiangmen Gold, Beijing DHC Group, China National Automation Control System Corp
- Biology pharmacy:**
Baiyunshan Pharmacevital Holdings Co., Ltd, Guangzhou Mingxing Pharmacy, Guangzhou Qixing Pharmacy, Guangzhou Xingqun Pharmacy, Xiangxue Pharmacy, Zhuhai Jinhong Pharmacy, Yunnan Mengsheng Pharmacy, Minda Pharmacy, Kaizhilin Pharmacy
- Other industries:**
Shandong Acedemy of Science, Shanghai Aerospace Industry, China Council for the Promotion of International Trade, Guangdong Chambers of Commerce for Enterprists from Hunan, GEDI, Homestar Group, Jiangxi Land Exploration and Planning, Inner Mongolia Little Sheep Hot Pot, Anhui Shuanglun Jiuye, Yangzhou Tobacco Company, Shanxi Ronghua Group, Chongqing Qianwei Kromschrom Meters, Sichuan Hanneng Photovoltaic Group,Dalian Haichang Group, Sinotruk, Zhejiang OUYI, German Abitec, VOOEC (America), Nordmeccanica (Italy)

*All logos and brands are property of their respective owners. All company and service names used in this website are for identification purpose only.